

DARSHAN ACADEMY
SUMMER HOLIDAY HOMEWORK (2021-22)
CLASS IX
ENGLISH

Q.1. Exploring expository writing, *Collect information about the author of the Poem - The Road Not Taken and answer the following questions:

- Birth and childhood of Robert Frost.
- What kind of careers did Robert Frost have in order to support his family?
- How do you know that Robert Frost was dedicated to writing poetry?
- Write about the awards and honours Robert Frost received in his lifetime.
- Why do you think he chose to write about topics such as rural life and life in new England?

Note: Paste picture of Robert Frost also.

Q.2. Life in lockdown and pandemic was not easy for any of us. Although we struggled a lot, we got opportunities to learn new every day. Write a diary entry sharing your sweet and sour experiences during the Coronavirus pandemic in about 100-120 words.

LITERARY SECTION

Q.3. Read chapters The Lost Child, The Adventure of Toto, In The Kingdom of Fools from Supplementary Reader and answer the following questions in about 100-120 words:

- (a) How does the child in the story, 'The Lost Child' lose himself? How far is he responsible for his predicament?
- b) Compare the child's behaviour before and after he lost his parents.
- c) Name all the people who were tried in the king's court and give reasons for each of their trials.
- d) How did the Guru manage to save the disciple's life? What does it reveal about the king and his minister?
- e) Why does the author say that 'Toto was not the sort of pet one could keep for long'?

Q.4. List some common topics for assessment of listening and speaking skills. Prepare any five.

- i. Digital Payments- issues and opportunities in India
- ii. Women in cricket
- iii. Craze of IPL matches
- iv. Unity in diversity
- v. Women are the backbone of society or Women empowerment
- vi. Role of school in shaping the life of a child
- vii. Save girl child
- viii. Impact of T.V advertising on children
- ix. My favourite political personality
- x. Honour Killing

निर्देशानुसार हल कीजिए – (LOTS)

प्रश्न 1—पाठ 1 ‘दो बैलों की कथा’ से 10 उपसर्ग तथा 10 प्रत्यय वाले ‘शब्द’ छोटकर उनमें से मूल ‘शब्द’, उपसर्ग व प्रत्यय अलग-अलग कर के लिखिए।

प्रश्न 2—पाठ 1 ‘दो बैलों की कथा’ में प्रयुक्त मुहावरे छोटकर लिखिए।

प्रश्न 3—स्वतंत्रता सेनानियों से संबंधित एलबम तैयार करें व उनका संक्षिप्त परिचय लिखिए।

प्रश्न 4—सत्याग्रह, शताब्दी, यथाशक्ति, महाराजा, दशानन, आजीवन, गजानन, दिनोंदिन, पाठशाला, रात-दिन आदि समस्त पदों का विग्रहकर भेद लिखिए।

प्रश्न 5—पाठ ‘ल्हासा की ओर’ में से पाँच समासिक ‘शब्द’ छोट कर समास का नाम लिखिए—

प्रश्न 6—गद्य तथा काव्य में पढाए गए पाठों में दिए गए गद्यांशों/ काव्यांशों के आधार पर प्रश्नोत्तर लिखिए। कराया गया सारा कार्य याद करिए।

गद्यांशों पर आधारित प्रश्नोत्तर—:(दो बैलों की कथा)

- झूरी प्रातःकालकोई भूसी।

क—हीरा—मोती की आँखों में विद्रोह और स्नेह का मिला—जुला भाव क्यों झलक रहा था?

ख—झूरी ने प्रातःकाल क्या देखा? तथा उस पर क्या प्रतिक्रिया प्रकट की?

ग—बालसभा ने क्या निश्चय किया तथा उनके लिए क्या किया?

- आज दोनों के.....हो गई थी।

क—भैरों की लडकी बैलों को दो रोटियाँ रोज क्यों खिलाती थी?

ख—लडकी का बैलों से आत्मीय संबंध का क्या कारण था?

ग—आत्मीयता से क्या तात्पर्य है?

- राह में.....कुआँ है।

क—दोनों बैलो ने अन्य पशुओं को स्वार्थी क्यों कहा?

ख—बधिक से क्या तात्पर्य है?

ग—अचानक बैलों को क्या अहसास हुआ? उनकी थकान व दुर्बलता कैसे गायब हो गई।

काव्यांशों पर आधारित प्रश्नोत्तर—: (सवैया—रसखान)

1.मानुष.....डारन।

(क) रसखान श्रीकृष्ण का सानिध्य पाने के लिए क्या-क्या कामना करता है?

(ख) पक्षी बनकर कवि कहाँ रहना चाहता है और क्यों ?

(ग) निर्जीव रूप में कवि ने क्या इच्छा प्रकट की है?

रस्सी कच्चे.....घेरे। (वाख—ललद्यद)

प्र० .कवयित्री द्वारा प्रभु प्राप्ति के लिए किए गए प्रयास क्यों व्यर्थ हो रहे हैं?

प्र०. जीवन रूपी भवसागर पार करने के लिए कवयित्री ने क्या आवश्यक बताया?

प्र०. कवयित्री के मन में बार-बार हुक क्यों उठती है?
(HOTS)

प्रश्न 7—सी०बी०एस०ई बोर्ड द्वारा लिए गए परीक्षा से संबंधित निर्णय पर चिंता व्यक्त करते हुए दो मित्रों की बातचीत को संवाद के रूप में लिखिए।

प्रश्न 8—कोरोना के नए स्ट्रेन के प्रति अपनी जागरूकता प्रकट करते हुए मित्र को पत्र लिखिए।

प्रश्न 9—व्याकरण पुस्तक में से कोई दो हल रहित अपठित गद्यांश व दो काव्यांश हल करिए।

प्रश्न 10—‘आज का युग—इन्टरनेट’ विषय पर अनुच्छेद लिखिए।

नोट—संपूर्ण गृहकार्य प्रेक्टिस कॉपी में करिए।

MATHEMATICS

SECTION – A

(LOTS)

- 1) Write decimal representation of $3 / 11$.
- 2) Find value of $(7^3 \times 5^4)^0$.
- 3) Write rationalizing factor of $\frac{5}{7 + \sqrt{3}}$.
- 4) Find the measure of an angle which is 32° less than its supplement.
- 5) Simplify $(64)^{-3}$.
- 6) Is $3x^5 - 17/x + 4x^2 + 9a$ a polynomial in x ?
- 7) Write degree of polynomial $5x^4 - 3x^7 + 20x$.
- 8) Write coefficient of x^3 in $2x^5 - 5x^3 + 10$.
- 9) Write any binomial in x having degree 15.
- 10) What is the zero of $2x - 1$?

SECTION – B

- 11) Rationalise the denominator $30/(5\sqrt{3} - 3\sqrt{5})$
- 12) Simplify $(2 + \sqrt{3})(4\sqrt{3} - 6)$
- 13) Simplify $\sqrt[3]{216} \div \sqrt{16}$
- 14) If $x = \sqrt{2} - 1$, then write the value of $1/x$.
- 15) Is 2 a zero of $5x^3 - 3x + 14$?
- 16) Find value of $f(x) = 2x^2 + 7x + 3$ at $x = -3$.
- 17) Find the value of $76^2 - 24^2$ using identity.

18. National Association For The Blind (NAB) aimed to empower and well-inform visually challenged population of our country, thus enabling them to lead a life of dignity and productivity.



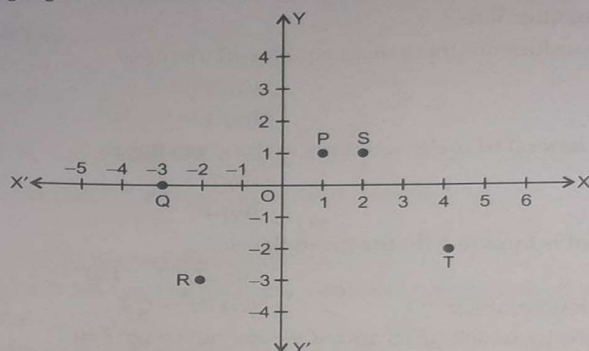
Ravi donated ₹ $\left(x^3 + \frac{1}{x^3}\right)$ to NAB. When his cousin asks to tell the amount donated by him, he gave a below hint.

$$x + \frac{1}{x} = 10$$

Answer the following questions :

- (A) $(x + a)(x + b) = x^2 + \dots\dots\dots x + ab$
- (i) $a + b$ (ii) ab
- (iii) $a - b$ (iv) $\frac{a}{b}$
- (B) $(x - y)^3 =$
- (i) $x^3 - y^3 - 3xy$ (ii) $x^3 - y^3 - 3xy(x - y)$
- (ii) $x^3 - y^3 - 3xy(x + y)$ (iv) $x^3 - y^3$
- (C) Which mathematical concept is involved in the above situation ?
- (i) Polynomial (ii) Circle
- (iii) Lines and angles (iv) Triangle
- (D) Find the amount donated by Ravi.
- (i) ₹ 1000 (ii) ₹ 850
- (iii) ₹ 970 (iv) ₹ 900
- (E) Find the amount donated by Ravi if $x + \frac{1}{x} = 7$.
- (i) ₹ 522 (ii) ₹ 422
- (iii) ₹ 222 (iv) ₹ 322

19. Five friends playing a game in which they are standing at different positions, P, S, T, R and Q.



Rohan is watching them playing. Few questions came to Rohan's mind while watching the game. Give answer to his questions by looking at the figure.

(A) What are the coordinates of P?

- | | |
|----------------|-----------------|
| (i) $(-1, 1)$ | (ii) $(1, -1)$ |
| (iii) $(1, 1)$ | (iv) $(-1, -1)$ |

(B) Name the point whose y-coordinate is zero :

- | | |
|---------|--------|
| (i) P | (ii) Q |
| (iii) R | (iv) S |

(C) Name the polygon formed on joining all these five points in an order.

- | | |
|-------------------|---------------|
| (i) Quadrilateral | (ii) Hexagon |
| (iii) Pentagon | (iv) Triangle |

(D) Name the point lying in the third quadrant.

- | | |
|---------|--------|
| (i) R | (ii) P |
| (iii) Q | (iv) T |

(E) $(x, y) = (y, x)$, if :

- | | |
|-------------------------|------------------------|
| (i) $x > y$ | (ii) $x < y$ |
| (iii) $\frac{x}{y} = 1$ | (iv) $x = \frac{1}{y}$ |

SECTION - C

20) Solve for x:

a) $4^{2x} = \frac{1}{32}$

b) $25^{x-1} \times 5^{2x+1} = 10^2 \times 5 + 5^3$

21) a) The angles of a triangle are in the ratio 5:3:7 what is the type of the triangle?

b) In which quadrant point $(-3, -4)$ lies ?

22) Without actual division show that $2x^4 - 5x^3 + 2x^2 - x + 2$ is exactly divisible by $x^2 - 3x + 2$.

23) The polynomial $p(x) = x^4 - 2x^3 + 3x^2 - 9x + 3a - 7$ when divided by $x + 1$ leaves the remainder 20, find value of a. Also find the remainder when $p(x)$ is divided by $x + 2$.

24) If $a = \sqrt{2} + 1$, find value of:

i) $a + 1/a$

ii) $a - 1/a$

25) If $(x + 2k)$ is a factor of $f(x) = x^5 - 4k^2x^3 + 3x + 2k + 3$, find k.

26) Factorise:

a) $1029 - 3x^3$

b) $2y^2 + 9y - 5$

27) a) Find the remainder when $f(x) = 9x^3 - 3x^2 + 14x - 3$ is divided by

$g(x) = 3x - 1$.

b) Check whether $2x - 3$ is factor of $2x^3 - 9x^2 + x + 12$ or not.

(HOTS)

28) Represent $\sqrt{7.5}$ on the number line.

29) Represent $\sqrt{6}$ on the number line.

SECTION – D

30) Convert $5.23 \dot{9}$ into the form $\frac{p}{q}$.

31) If $x + y = 9$ and $xy = 20$, then find the value of $x^2 + y^2$.

32) If $p(x) = 6x^2 - 5x - 1$, find the value of $3p(-1) + 2p(0)$.

33) a) If $a^2 + \frac{1}{a^2} = 14$, find the value of $a^3 + \frac{1}{a^3}$

b) If $x + \frac{1}{x} = 3$, find the value of $x^4 + \frac{1}{x^4}$

34) values of a and b if $\frac{5\sqrt{2} + 3}{5\sqrt{2} - 7} = a - b\sqrt{2}$.

35) Simplify $\left(\frac{16}{81}\right)^{-3/4} \times \left[\left(\frac{25}{9}\right)^{-3/2} + \left(\frac{125}{8}\right)^{2/3}\right]$

36) Factorise $2x^3 + 3x^2 - 5x - 6$.

37) If $y = 2$ and $y = 0$ are the zeros of the polynomial $f(y) = 2y^3 - 5y^2 + ay + b$. Find the value of a and b .

38) Show that : $(x^{(a-b)})^{a+b} \cdot (x^{(b-c)})^{b+c} \cdot (x^{(c-a)})^{c+a} = 1$

39) If $x = 3 + 2\sqrt{2}$, find value of:

i) $\sqrt{x} - \frac{1}{\sqrt{x}}$

ii) $x^2 + \frac{1}{x^2}$

40) Find values of x and y if $\frac{2}{7 + 3\sqrt{5}} = x + y\sqrt{5}$

42) State and prove the angle sum property of the triangle.

43) AB, CD and EF are three concurrent lines passing through the point O such that OF bisect $\angle BOD$. If $\angle BOF = 35^\circ$, FIND $\angle BOC$ and $\angle AOD$.

44) If the bisectors of a pair of alternate angles formed by a transversal with two given lines are parallel, prove that the given lines are parallel.

45) Locate the points A(2,0), B(6,0) and C(4,6) on the graph paper, then find area of the figure obtained.

SCIENCE

BIOLOGY

LOTS

PROJECT

- Make a ppt or video to show the effects of corona virus on our country and write its preventive measures also. **OR**
- Prepare a model to compare Plant cell and Animal cell using common household items like grains and pulses & waste materials
- Prepare a Power Point Presentation on the topics mentioned below as per your roll numbers.

CHAPTER	TOPIC	ROLL NUMBERS
Chapter-1	Matter in our surroundings	1-3
Chapter 2	Is Matter Around Us Pure	4-6
Chapter 3	Atoms and Molecules	7-9
Chapter 5	The Fundamental Unit of Life	10-12
Chapter 6	Plant Tissues	13-15
Chapter 7	Animal Tissue.	16-18
Chapter 8	Diversity in Living Organisms	19-21
Chapter 9	Motion	22-24
Chapter 10	Force and Laws of Motion	25-27
Chapter 11	Gravitation	28-30
Chapter 13	Work, Power And Energy	31-33
Chapter 14	Why Do we Fall Ill?	34-36
	- Natural Resources	37-39
	- Different types of Diseases.	40-42

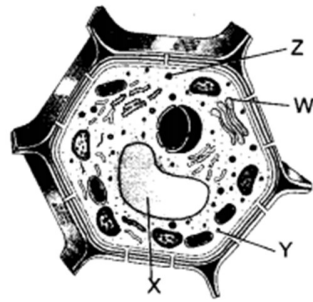
Q1 A cell is like our school. Each part of the cell (and school) has responsibilities that must be done and certain organelles (people or places) to do them. Identify the function of the following parts of the cell. Then, identify which person does the same job (or a place like it) in the school. The first one is done for you as an example to follow.

ORGANELLE	FUNCTION	PART OF OUR SCHOOL THAT HAS A SIMILAR FUNCTION
Cell Membrane	Controls what goes in and out of the cell	Front Office
Lysosome		
Mitochondria		
Nucleus		
Ribosome		
Cell Wall (Plant only)		

Q2 Mention the change in human red blood cells when they are placed in hypotonic salt/sugar solution

Q3 How will absence of any one of the cell organelle affect the cell's working?

Q4 Label W, X, Y and Z.



(I) What is the covering membrane of X known as?

(II) Which of them contains hydrolytic enzymes?

(III) Which one of them takes part in storage, modification and packaging of various chemicals.

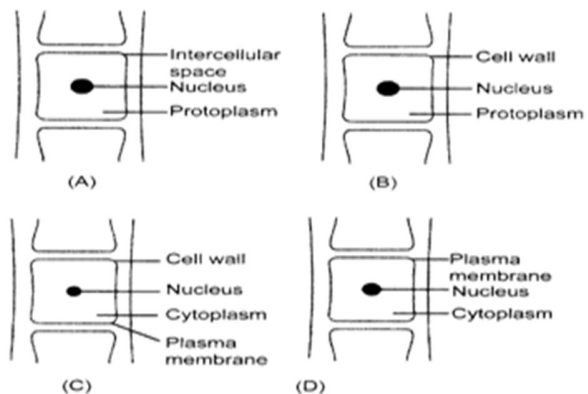
Q5. MULTIPLE CHOICE QUESTIONS:

(i) Roshini is making a temporary mount of onion peel. What precautions should be taken to avoid the entry of air bubbles on the slide?

- (a) Coverslip should be dropped on to the peel from a certain height.
- (b) Peel should be allowed to fold over itself once or twice.
- (c) Coverslip should be gently dropped over the peel.
- (d) Peel should be immersed in stain for over an hour.

(ii) Diagrams of cells of an onion peel were labelled by four students as given below. The correctly labelled diagram is

- (a) nucleus, cytoplasm,
- (b) nucleus, vacuole.
- (c) vacuole, nucleus.
- (d) cytoplasm, vacuole.



(iii) Identify figures A and B.

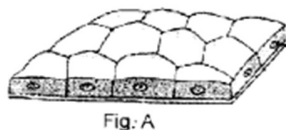


Fig. A



Fig. B

1. Which is called tessellated and pavement epithelium?
2. Which one lines gastro-intestinal tract and epiglottis?
3. Which one allows diffusion of substances?

HOTS

Q1 Why is endocytosis found in animals only?

Q2 What will happen if -

- (a) Almonds are soaked in water.
- (b) Excess amount of fertiliser is added to green grass lawn.

Q3 Aman, a student of class IX suffered from fever with headache. After blood test the doctor confirmed that he was suffering from Dengue & platelets count in his sample was also low

- (a) What does a doctor advise if the Platelets count is very low?
- (b) What precautions one should take to overcome the situation?

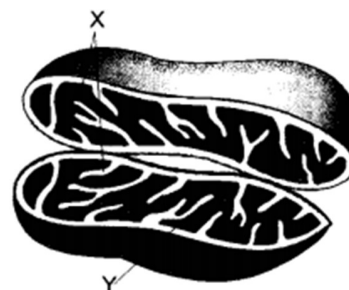
Q4 Label X and Y

1. What is the function of X?

What is the composition of Y?

2. Identify the above diagram and what is its common name?

Q5 Why are xylem & Phloem called complex tissues? How are they different from each other?



CHEMISTRY

- Make a pictiary of 5 new words related to lesson-1 NCERT and also paste pictures related to the topic.

OR

- Draw a 3D chart of A3 size on any one of the topics – Fractional distillation, chromatography, sublimation, evaporation, inter conversion of states of matter.

LOTS

Q1 Name S.I unit of measuring temperature. The boiling point of water is 100°C under normal atmospheric pressure. Convert this temperature to S.I Units.

Q2. A balloon when kept in sun, bursts after some time. Why?

Q3 Asha was making tea in a kettle. Suddenly she felt intense heat from the puff of steam gushing out of the spout of the kettle. She wondered whether the temperature of the steam was higher than that of the water boiling in the kettle. Comment.

Q4 MULTIPLE CHOICE QUESTIONS:

(i) On converting 308 K, 329 K and 391 K to Celsius scale, the correct sequence of temperatures will be:

- | | |
|--------------------------|--------------------------|
| (a) 33°C, 56°C and 118°C | (b) 35°C, 56°C and 119°C |
| (c) 35°C, 56°C and 118°C | (d) 56°, 119°C and 35° C |

(ii) In tincture of iodine, find the solute and solvent?

- (a) alcohol is the solute and iodine are the solvent
- (b) iodine is the solute and alcohol are the solvent
- (c) any component can be considered as solute or solvent
- (d) tincture of iodine is not a solution

HOTS

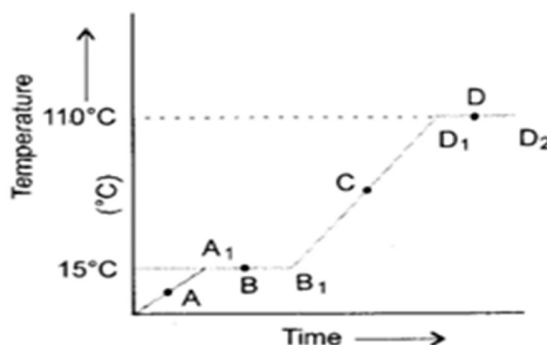
Q1 Give Reasons:

- (a) Naphthalene balls disappear with time without leaving any solid residue.
- (b) A wooden table should be called a solid.

© Dogs generally hang out their tongue in summer

Q2 The temperature-time graph given below shows the heating curve for pure wax. From the graph answer the following:

- (a) What is the melting point of the substance?
 (b) What is its boiling point?
 (c) Which portions of the graph indicates that change of state is taking place.
 (d) Name the terms used for heat absorbed during change of states involved in above processes.



Q3 A sample of water under study was found to boil at 102°C at normal temperature and pressure. Is the water pure? Will this water freeze at 0°C ? Comment.

Q 4 Study the given diagram and answer the following questions:

(a) Write the chemical reaction involved in the process.

(b) Mention the colour of:

1. Copper powder and
2. the substance formed after heating it.

Q5 A drop of ink and a drop of honey are placed in wattle in different beakers. Which of the two will spread faster? Give reason for your answer.

Q6 Why do people sprinkle water on a roof after a hot summer day?

Q7 On suffering from high fever, which will lower your body temperature more-ice- or ice-cold water? Why?

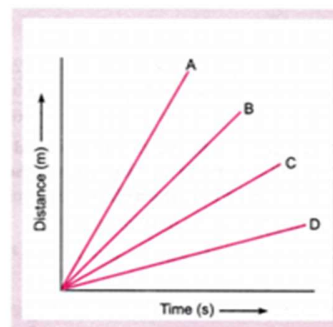
PHYSICS

- Using basic concepts of physics, Make a working model on any renewable resources of energy. Solar energy, Hydro energy, wave energy, Wind energy, Geothermal energy, Biogas plant, Tidal energy

LOTS

Q1 Mention the two precautions to determine the boiling point of water in laboratory.

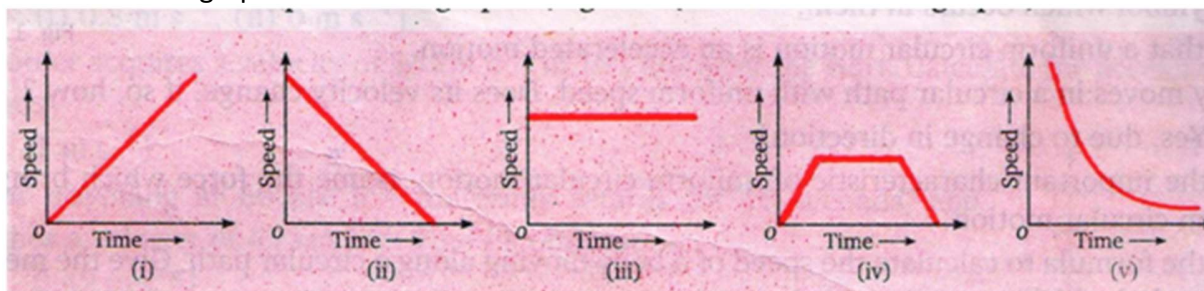
Q2 Four cars A, B, C and D are moving on a levelled road. Their distance versus time graphs is shown in figure. Which car is the slowest?



Q3 Why does (second)² in the unit of acceleration?

Q4 Given below are some speed time graphs.

In which of the graph-

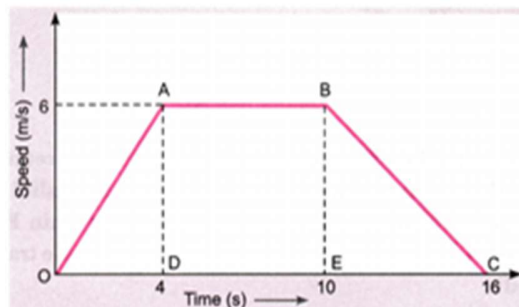


- (a) Speed is constant (b) Speed is increasing (c) speed is decreasing (d) What happens in (iv & v)

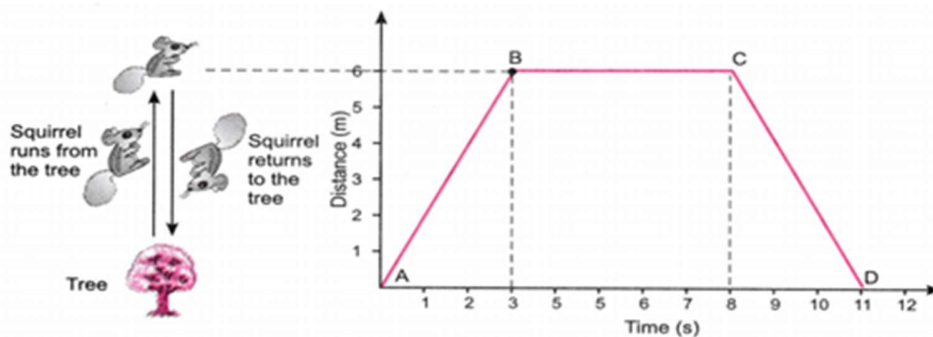
HOTS

Q1 Study the speed-time graph of a body given here and answer the following questions:

- What type of motion is represented by OA?
- What type of motion is represented by AB?
- What type of motion is represented by BC?
- Find out the acceleration of the body.
- Calculate the retardation of the body.
- Find out the distance travelled by the body from A to B.



Q2 Suppose a squirrel is moving at a steady speed from the base of a tree towards some nuts. It then stays in the same position for a while, eating the nuts, before returning to the tree at the same speed. A graph can be plotted with distance on the x-axis and the time on y-axis.



Observe the graph carefully and answer the following questions.

- Which part of the graph shows the squirrel moving away from the tree?
- Name the point on the graph which is 6 m away from the base of the tree.
- Which part of the graph shows that the squirrel is not moving?
- Which part of the graph shows that the squirrel is returning to the tree?
- Calculate the speed of the squirrel from the graph during its journey.

SOCIAL SCIENCE

HISTORY: CHAPTER 1 (HOTS)

- On what charge was Louis XVI of France sentenced to death?
- Explain the contribution of the philosophers in the French Revolution?
- 'Ideas of liberty and democratic rights were the most important legacy of the French Revolution'. Explain the statement in the light of French Revolution.
- 'The period from 1793 to 1794 is referred to as a 'Reign of Terror'.' Give three points in support of the statement.
- How did the revolution affect the everyday life of the people of France?

MAP WORK: On the political map of Europe, locate and name the following countries:

- | | | | | | |
|------------|-----------|----------------|-------------|-------------|----------------|
| 1. France | 2. Spain | 3. Austria | 4. Britain | 5. Portugal | 6. Neitherland |
| 7. Belgium | 8. Russia | 9. Switzerland | 10. Germany | 11. Italy | |

GEOGRAPHY: Chapter 1 (LOTS)

- 1.What is the westernmost longitude of India?
- 2.Which routes are the oldest and provided India's relationships with other countries?
- 3.Which meridian has been selected as the Standard meridian of India?
- 4.'India has a long coastline which is advantageous? 'Explain.
- 5.How has the location of India contributed to exchange of ideas and commodities? Explain.
- 6.Map based questions:
On the given political Map of India Mark and label the following:

a) Standard Meridians	b) Southern point (Indira point)
c)Smallest State	d) Largest State

e) On a separate political map of India, mark all the states with their capitals.

POLITICAL SCIENCE (HOTS)

1. Are elections sufficient to guarantee the existence of democratic government? Give reasons for your answer?
2. Mention any three main features of a Democratic government.
3. Mention the four main merits of a democratic government.

4. Read the given extract and answer the following questions:

Zimbabwe attained independence from White minority rule in 1980. Since then, the country has been ruled by ZANU-PF, the party that led the freedom struggle, its leader, Robert Mugabe, ruled the country since independence. Elections were held regularly and always won by ZANU-PF. President Mugabe was popular but also used unfair practices in elections. Over the years his government changed the constitution several times to increase the power of the President and make him less accountable. Opposition party workers were harassed and their meeting disrupted.

Answer the following MCQs by choosing the most appropriate option:

- 1 Which party of Zimbabwe led the freedom struggle?
(a) PRI (b) ZANU-PF
(c) National People's Congress (d) None of the above
- 2 -----was the President of Zimbabwe since independence.
(a) General Musharraf (b) Saddam Hussein
(c) Robert Mugabe (d) None of the above
- 3 How did the ruling party in Zimbabwe deal with the opposition party?
(a) party meeting got disrupted (b) party workers were harassed
(c) both a) & (b) (d) None of the above
- 4 Robert Mugabe was forced out of office in:
(a) 2014 (b) 2015
(c) 2016 (d) 2017

5. Read the cartoons given in the chapter 'What is Democracy? Why Democracy?' and write two sentences about each cartoon

ECONOMICS: Chapter 1 and 2 (LOTS)

1. What is meant by working capital?
2. In which type of activity is Dairy farming included?
3. What is the major disadvantage of using HYV seeds in agriculture?
4. What is meant by the Green Revolution? Write any two main features.
5. Highlight three differences between traditional and modern farming methods.
6. What is Land? Suggest any three ways to sustain Land.

INFORMATION TECHNOLOGY

LOTS

1. What is a spreadsheet?
2. What are the tasks that a spreadsheet can do?
3. Name some popular spreadsheet softwares.
4. Name the different components of a spreadsheet.
5. What are the different kinds of data that can be entered in a worksheet?
6. Write the two ways to do calculation in a worksheet.
7. What is a Quick Access toolbar? Where is it located?
8. In how many ways can you format the cell contents? Explain.

HOTS

1. What is the default alignment of text and number data in a cell?
2. By default, how many buttons are equipped in the Quick Access Toolbar? Can we add/remove buttons or options in the Quick Access Toolbar?
3. Write the steps to rename a worksheet.
4. What is the extension of a spreadsheet?
5. Which symbol is used to insert a formula in a worksheet?
6. Write commands for the operation given below based upon the spreadsheet shown below:

	A	B	C	D	E	F
1	NAME	BASIC (Monthly)(Rs.)	HRA (% of Basic)	DA (Rs)	Bonus	NET SALARY
2	Suresh	5000	10	450	600	
3	Karishma	5600	13	800	600	
4	Atul	3500	15	900	400	
5	Harmeet	4500	15	500	500	
6	Abhay	6000	20	400	700	

7	Jyotsana	7500	12	500	700	
8	Amit	2500	10	300	700	
9	Total salary					
10	No. of Emp					

(i) To calculate the net salary as sum of Basic, HRA and DA for each employee.

(ii) To find the total salary of the employees display in cell F9.

(iii) To count the number of employees and display in cell B10.

(iv) The manager wants to insert a new column next to HRA for TA. How will he do it?

(v) To calculate TA as 10 % of Basic. Write the formula.

7. Suggest the Calc functions that can be used for carrying out following operations:

a. To calculate total marks of a student if his marks in five subjects are given.

b. To find out the marks of top scorer in a class.

c. To calculate average sales made by salesman of a company, if sales made by each of the salesman is available.

d. To find out minimum quoted rate from various quotations available.

दर्शन अकादमी
ग्रीष्मावकाश गृहकार्य (LOTS)
कक्षा – नौवीं विषय हिन्दी 'ब'
2021-22

1. निम्नलिखित प्रश्नों के उत्तर लिखिए।

- (क) बुढ़िया के दुख को देखकर लेखक को अपने पड़ोस की संभ्रांत महिला की याद क्यों आई?
- (ख) पोशाक हमारे लिए कब बंधन और अड़चन बन जाती है?
- (ग) 'रैदास' के पदों का केंद्रीय भाव लिखे।
- (घ) सोनजुही में लगी पीली कली को देखकर लेखिका के मन में कौन से विचार उमड़ने लगे?
- (ङ) लेखिका का ध्यान आकर्षित करने के लिए गिल्लू क्या करता था?

2. शब्द और पद में अंतर उदाहरण सहित स्पष्ट करे।

3. निम्नलिखित शब्दों में से मूल शब्द व प्रयुक्त उपसर्गों को अलग-अलग करके लिखिए।

अधिकार, उपचार, परिचारिका, निर्वाह, दुर्लभ

4. निम्नलिखित शब्दों से मूल शब्द और प्रत्यय अलग-अलग कीजिए।

थकावट, आकर्षित, चमकीली, दुखी, बुढ़िया

5. निम्नलिखित विषयों पर संकेत बिंदुओं के आधार पर लगभग 80 से 100 शब्दों में अनुच्छेद लिखिए।

(क) इंटरनेट की दुनिया

संकेत बिन्दु: • अद्भुत आविष्कार, • उपयोगिता एवं कार्यक्षेत्र • उपयोगिता एवं कार्यक्षेत्र
• दुरुपयोग • उचित प्रयोग आवश्यक • उपसंहार

(ख) करत-करत अभ्यास के जड़मति होत सुजान

संकेत बिन्दु: • सूक्ति का आशय • जीवन में अभ्यास का महत्व • उदाहरण • निष्कर्ष

6. अपने विद्यालय में आयोजित वृक्षारोपण समारोह का वर्णन करते हुए मित्र को पत्र लिखिए।
7. खाने-पीने की चीज़ों में बढ़ती हुई मिलावट की समस्या पर दो महिलाओं के मध्य हुई बातचीत को संवाद के रूप में लिखिए।

(HOTS)

1. निम्नलिखित प्रश्नों के उत्तर लिखिए

(क) "दुःख का अधिकार" कहानी देश में फैले अंधविश्वासों और ऊँच-नीच के भेद भाव का पर्दाफाश करती है? स्पष्ट कीजिये

(ख) "गिल्लू की गतिविधिओं के आधार पर लिखिए कि पशु-पक्षी भी बाल सुलभ-क्रीड़ाओं में किस प्रकार आनंद लेते हैं?

2. शब्द और पद में अंतर उदाहरण सहित स्पष्ट करें।

3. श्रुतिसमभिन्नार्थक शब्दों को वाक्य बनाकर स्पष्ट कीजिये

अनिल-अनल , समान-सामान , दिन-दीन , पवन-पावन , और-ओर , अवधि-अवधी

4. निम्नलिखित शब्दों में से मूल शब्द और प्रत्यय अलग-अलग कीजिये

चमकीली , गरीबी , दुखी , बुढ़िया , धकावट

5. निम्नलिखित शब्दों में से मूल शब्द और उपसर्ग अलग-अलग कीजिये

निर्वाह , निर्गुण , उपचार , अधिकार , बेहया

6. "सत्यमेव जयते" विषय पर अनुच्छेद लिखिए।

7. विद्यालय में वृक्षारोपण समारोह का वर्णन करते हुए पिता जी को पत्र लिखिए।

8. "कोरोना" की रोकथाम के लिए नारे की रचना कीजिये।